

ZT-100 S-Series Water Cut Analyzers

- Full Bore
- Isokinetic
- 1-8 inch
- Safe Anti-Blowout design





ZT-100 S-Series Water Cut Analyzers

The iso-kinetic S-Series provides reliable water content metering in all small pipe applications. The ZT-100 S-Series of Water Cut Analyzers can be installed inline or in bypass. For larger pipes also check out the F-Series and the I-Series of water cut analyzers.

The ZelenTech ZT-100 Water Cut Analyzer determines the percent water cut in an oil emulsion without requiring the physical separation of the fluids. The emulsion stream is continuously monitored for capacitance and converted into percentage of water by the Water Cut Analyzer logic.

ZelenTech ZT-100 Watercut Monitors (also known as BS&W, OWD, WFM or Water in Oil Analyzers) offers you unmatched flexibility as we offer virtually unlimited number of configurations.

The ZelenTech ZT-100 S-Series can optionally be fitted with an integrated Static Mixer (SM-Series). The mixer will ensure that a well mixed and homogenized stream will reach the sensor. We configure mixer elements and spacing in accordance with standards such as ISO 3171 and API MPMS8.2 to ensure that the sensor will see a truly representative view of what is going on in your pipes.

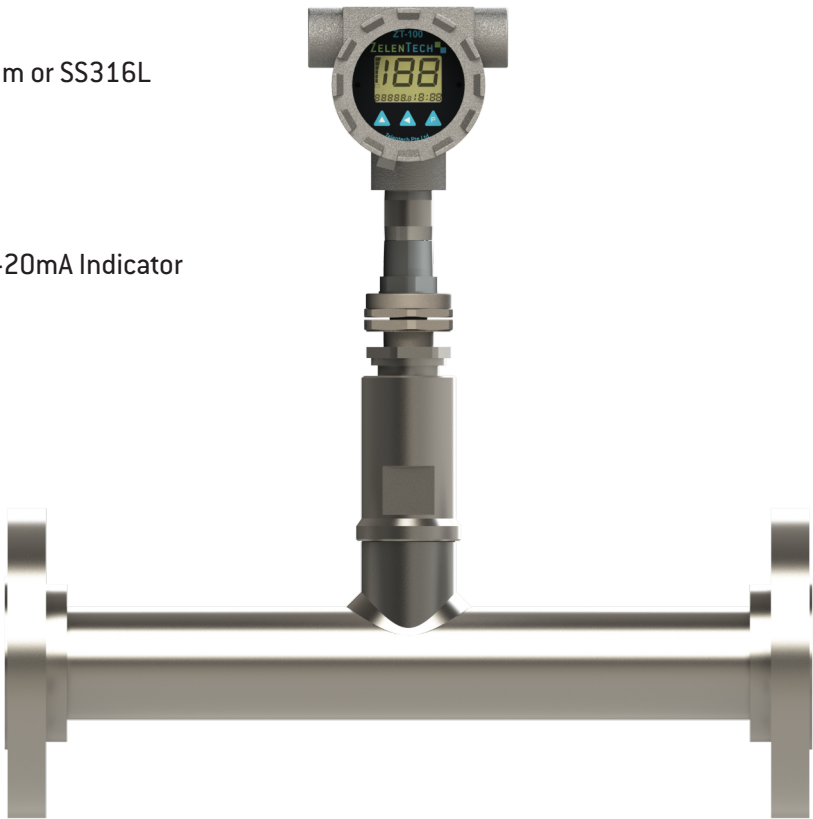
GENERAL INFORMATION - S-SERIES

Mounting	In Line. Horizontal or Vertical. (Avoid air traps/water traps)
Size	1, 1.25, 1.5, 2, 2.5, 3, 4, 6, 8, 10, 12 inch
Pressure Ratings	Up to 100 bar
Process Connection	ANSI, DN or JIS flange 1"-12". Threaded NPT, BSP, BSPT 1" to 3"
Range	Low Range 0-25%, High Range 0-65%, High Range 0-100% (select services).
Certification	IECEX, ATEX, ETL (us/ca)

GENERAL SPECIFICATION

Operating Principle	RF Admittance / High Res Digital Capacitance	
Power	24VDC (Loop Powered)	
Output	4-20mA. Fully scalable	
Digital Interface	HART	
Operating Temp	Process Fluid	Standard version 0-135 deg C. High Temp version 0-240 deg C
	Ambient	-20 to 60 deg C
Resolution	Low Range: 0.003%	High Range: 0.01%
Repeatability and Precision	Low Range: Up to 0.01%	High Range: Up to 0.05%
Wetted Materials	SS316L. Optional: Duplex 2205, Inconel 625, Monel 400, Super Duplex 2507	
Seal Material	PEEK with Viton A O-Ring. O-Ring optional: Nitrile, PTFE, Kalrez.	
Corrosion Protection	NACE MR-0175/ISO 15156 2009, Sour service compliant	
Transmitter Mounting	Integral with sensor	
EXD Enclosure	Powder Coated Aluminium or SS316L	
Electrical Connection	3/4" NPT or M20	
Ingress Protection	IP66	
Humidity Protection	Conformal coated PCB	
Accessories	Loop Powered remote 4-20mA Indicator	

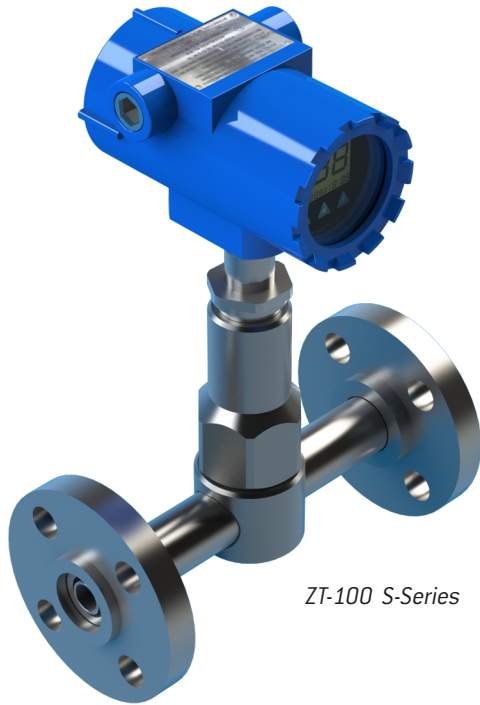
- IECEX: Ex db IIC T4 Gb, Ta= -20°C to +60°C
ATEX: Ex II 2 G, Ex db IIC T4 Gb, Ta= -20°C to +60°C
ETL: Class I, Zone 1 AEx db IIC T4 Gb, Ex db IIC T4 Gb
ETL: Class I Division 1 Gr BCD T4, Ta=-20°C to +60°C



DESIGN AND INTEGRITY

The ZelenTech ZT-100 Water Cut Analyzer are built to strict standards. Ability to accommodate a vast variety of Piping Specifications ensures that the meter becomes an integral part of the piping system and not a weak link.

ZelenTech's ISO9001 quality system is able to accommodate any customer requirements for documentation, material traceability and quality assurance.

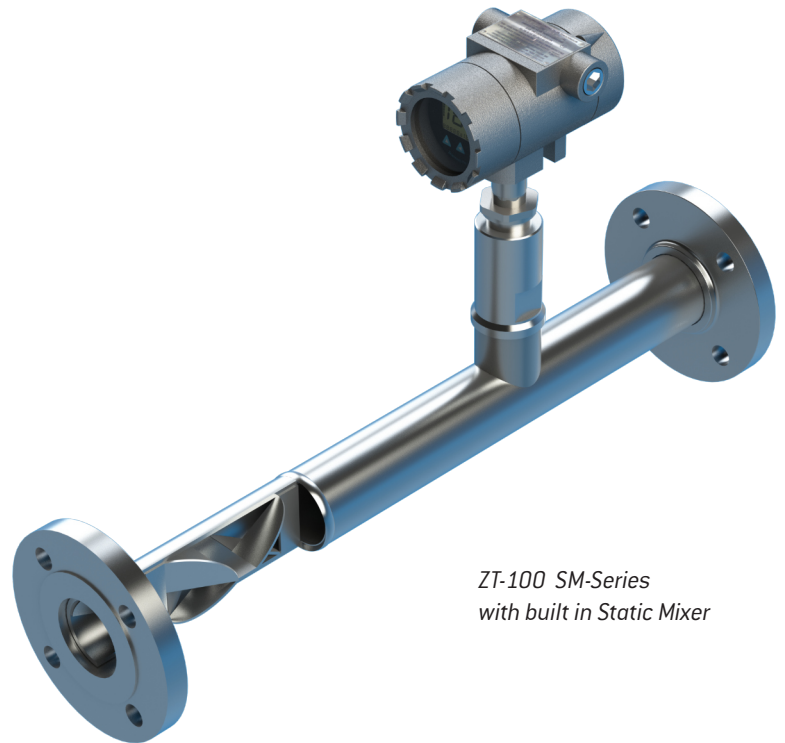


ZT-100 S-Series

FLOW CONDITIONING

The ZT-100 Water Cut Analyzer can be supplied with built in Static Mixer providing a well conditioned stream both for inline measurement and sampling.

Designed in accordance with standards such as API 8.2, API MPM TR2570 and ISO 3171.



*ZT-100 SM-Series
with built in Static Mixer*

Why ZelenTech?

The ZelenTech ZT100 Watercut Monitor is designed to provide reliable results in environments from the North Sea to Sahara. Offering unmatched flexibility for material, size, features and configurations the ZT100 can be integrated into almost every oil carrying system.

ZELENTech PTE. LTD
55 SERANGOON NORTH AVENUE 4
UNIT #04-05
SINGAPORE 555859

SALES@ZELENTech.CO

WWW.ZELENTech.CO